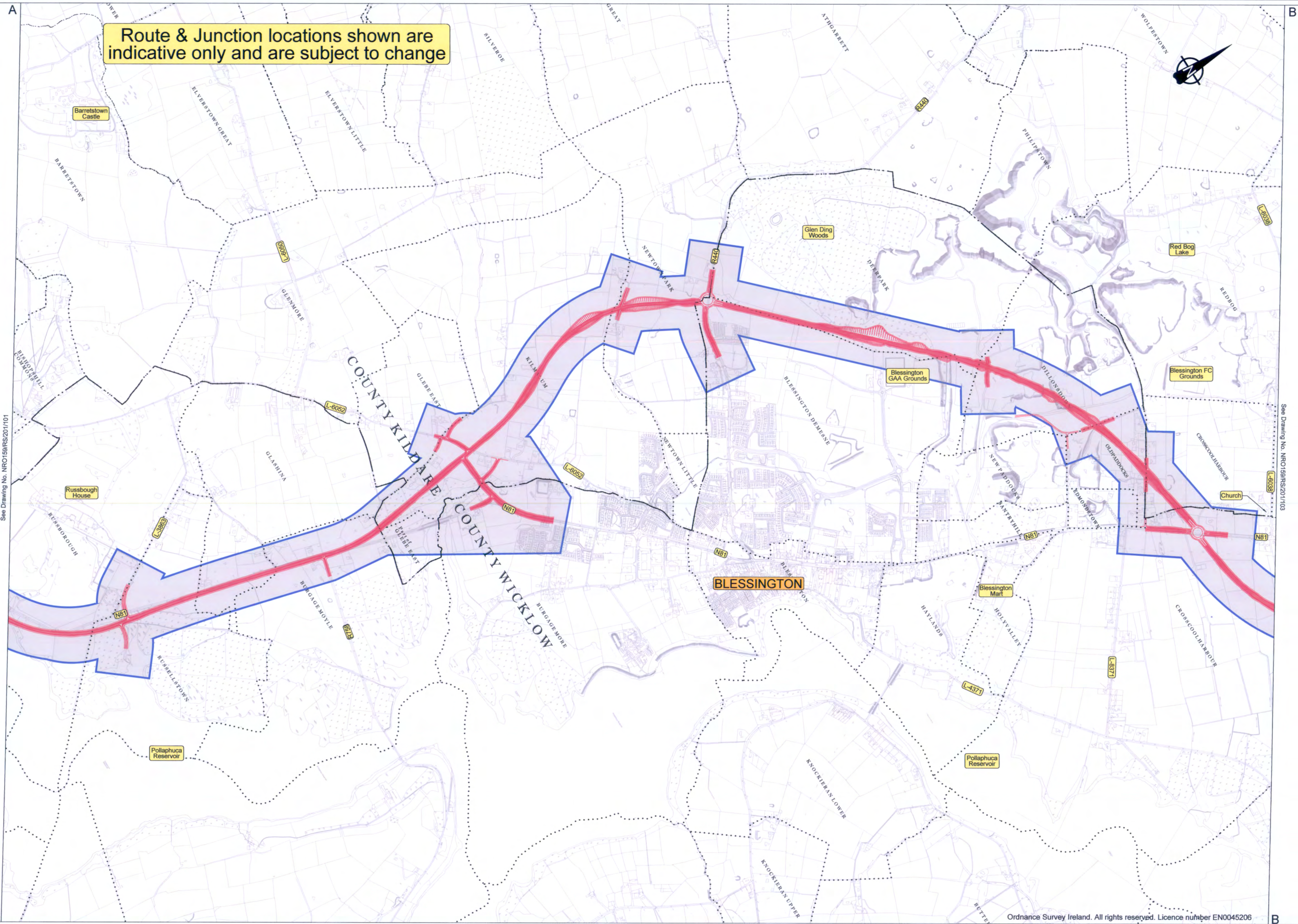


Route & Junction locations shown are indicative only and are subject to change



See Drawing No. NRO159/RS201/101

See Drawing No. NRO159/RS201/103

Ordnance Survey Ireland. All rights reserved. Licence number EN0045206

Plan

Legend:

Preferred Route Corridor

Kildare County Council

National Roads Design Office

Mandlins, Naas, Co. Kildare, Ireland
Tel: +353-45-898199, Fax: +353-45-875845, e-mail: kco@kildaremco.com

MICHAEL O' LEARY
ACTING DIRECTOR of SERVICES
Transportation & Public Safety

DAVID O' GRADY BE MSc HDip CEng MIE
ACTING SENIOR ENGINEER

Suffix	Initials	Date	Description
1		Feb. '12	Initial Issue
REVISIONS			

STAGE

PRELIMINARY

N.R.A. APPROVAL

TENDER

CONTRACT

PROJECT N81Hollywood Cross to Tallaght Road Improvement Scheme

DRAWING Public Consultation Preferred Route Corridor

SHEET 2 - 4

File name: N:\Projects\NRO159\Drawing\200RS201 Dwg.No. NRO159/RS/201/102

Scale: 1:10,000 @ A1

Date: Feb.' 2012

Drawn by: B.K.

Checked: A.K.

Revision